



Birch Lane | Brereton, Rugeley | WS15 1EJ

Asking Price £385,000

 **Webbs**  
estate agents



## Summary

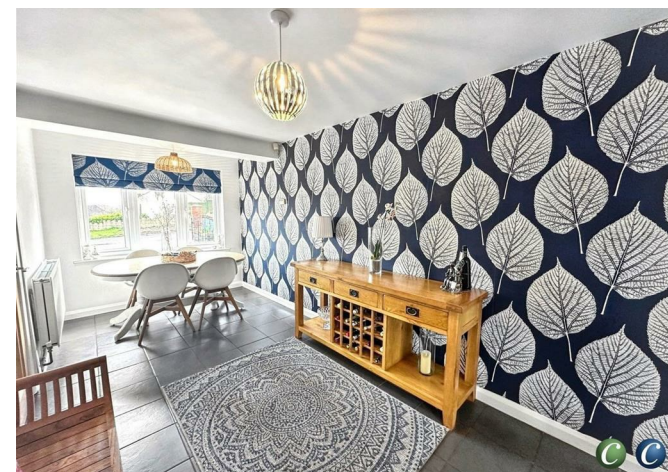
WEBBS ESTATE AGENTS are proud to offer this beautifully presented four-bedroom detached family home on Birch Lane, Brereton, which offers a perfect blend of modern living, space, and convenience. Just a stone's throw from Cannock Chase. This impressive property is ideally located close to local amenities, excellent schools and useful transport links, making it an ideal home for families and professionals alike. Viewing is essential to fully appreciate the deceptive size and space on offer. Briefly comprising: Entrance Hallway, Lounge, Open Plan Kitchen, Dining Room, Downstairs Cloakroom, Garage, Four Bedrooms, Ensuite, Family Bathroom, Rear Garden, Large Driveway

## Key Features

- FOUR BEDROOM DETACHED FAMILY HOME
- MODERN FITTED KITCHEN
- ENSUITE
- ON THE EDGE OF CANNOCK CHASE
- CLOSE TO AMENITIES
- TWO RECEPTION ROOMS
- DOWNSTAIRS CLOAKROOM
- LARGE DRIVEWAY
- REAR GARDEN
- VIEWING ESSENTIAL

## Rooms and Dimensions

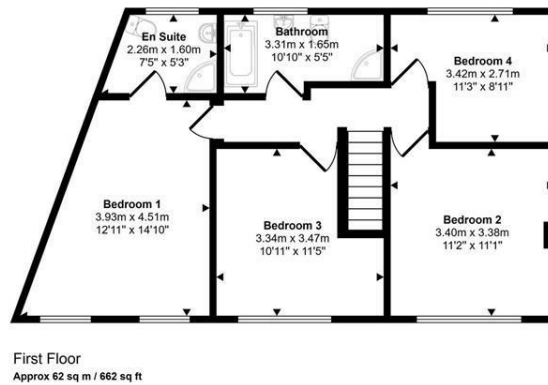
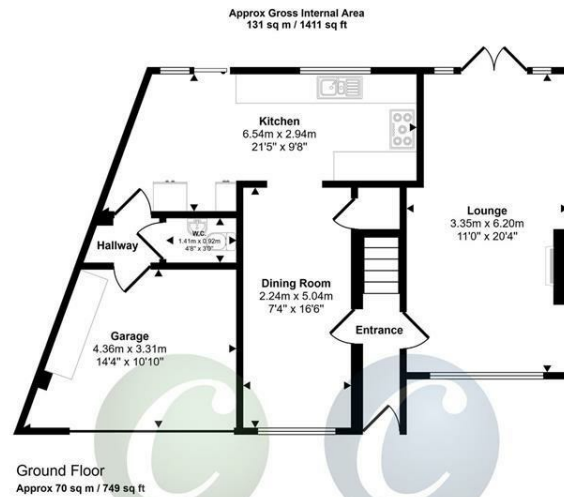
### Identification Checks (R)





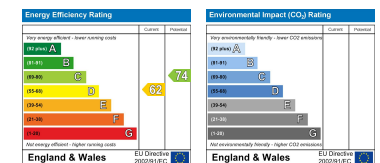






This floorplan is only for illustrative purposes and is not to scale. Measurements of rooms, doors, windows, and any items are approximate and no responsibility is taken for any error, omission or mis-statement. Icons of items such as bathroom suites are representations only and may not look like the real items. Made with Made Snappy 360.

Webbs Estate Agents - endeavour to maintain accurate depictions of properties in Virtual Tours, Floor Plans and descriptions, however, these are intended only as a guide and purchasers must satisfy themselves by personal inspection.



Globe House Upper Brook Street, Rugeley, Staffordshire, WS15 2DN

Tel: 01889 583377 | Email: [rugeley@webbsea.co.uk](mailto:rugeley@webbsea.co.uk) | [www.webbestateagents.co.uk](http://www.webbestateagents.co.uk)